

Holiday Treasures



December 1, 2023 – January 12, 2024

Keny Galleries cordially invites you
to the opening reception for *Holiday Treasures*



Friday, December 1: 6:30pm - 8:30pm

300 East Beck Street, Columbus, Ohio

614.464.1228 / www.kenygalleries.com

Valet Parking Available

Exhibition on view through January 12, 2024

INTRODUCTION

Our *Holiday Treasures* exhibition features a wide range of fine visual expression by over thirty contemporary and historic artists that we personally represent or offer regularly because of their singular resonant aesthetic contributions throughout the past one hundred fifty years.

Our contemporary artists are represented with a plethora of media including oil paint, pastel, ink, found wood, and monotype. The imagery includes a broad spectrum of representation from tight, fully realized objects to abstract painterly compositions.

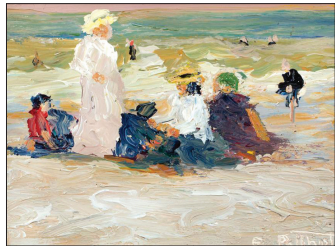
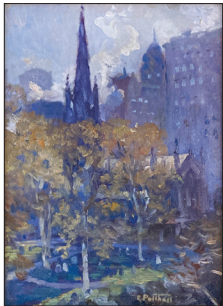
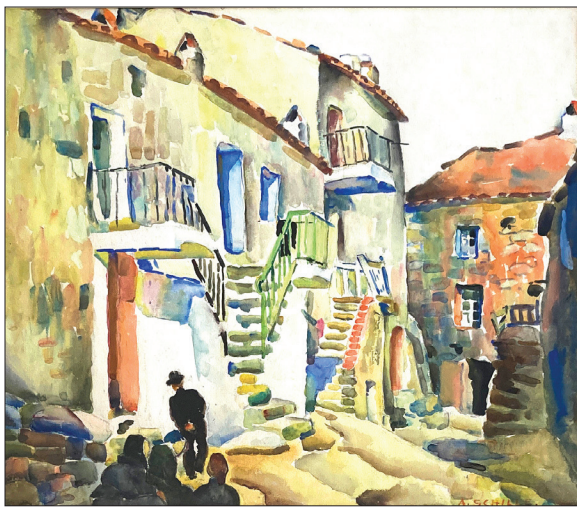
The breadth of visual media that is featured in major exhibitions and included in the most eminent museum collections throughout the United States has changed tremendously over the last generation. Also, thankfully the many, often complex, cultural veins of expression which comprise the body of American art are being celebrated by art schools, galleries, museums and the public today.

Jim and I hope that you will join us for this enjoyable Holiday Treasures exhibition!

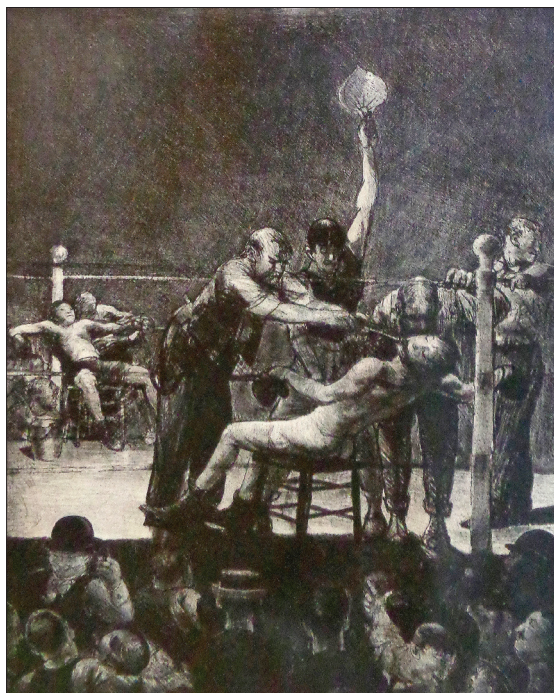
Tim Keny

Front Cover: Laura Coombs Hills, *Three Roses* pastel on paper, 9 1/4" x 7 3/4"

This Page (left to right): Elijah Pierce, *Black Beauty (Iena Home)*, c. 1940, bas relief woodcarving, 8 3/4" x 5 1/4"; Edna Boies Hopkins, *Merry Xmas from Cape Cod*, c. 1917-20, color woodcut, 4 1/2" x 3 1/2"; Aminah Robinson, *Black Woman with Shells in Her Hair*, mixed media on handmade paper, 11" x 9 1/2".

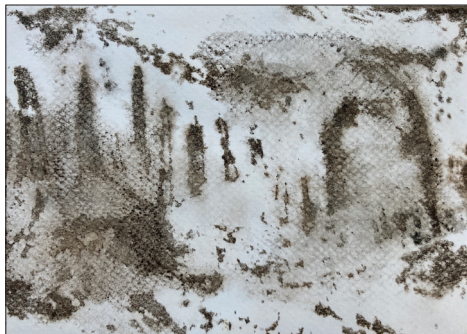


Clockwise from top: Alice Schille, *Morning in the Pyrenees* c. 1925, watercolor, 17" x 21"; Alice Schille, *Sunlit Trees* c. 1920-25, watercolor, 4 3/4" x 5 3/4"; Alice Schille, *New Mexico Hills (Winding Road)* c. 1926, watercolor, 5" x 6 1/8"; Edna Boies Hopkins, *Mary and her Grandmother* 1917, color woodcut, 10" x 9"; Edward Potthast, *A breezy Day at the Beach* c. 1915, oil on panel, 4" x 6"; Ethel Mars, *Flamingos* c. 1903-04, color woodcut, 7 3/4" x 3 3/4"; Edward Potthast, *Trinity Church* c. 1920, oil on panel, 12 1/4" x 9"; Maurice Prendergast, *St Mala* c. 1907, oil on panel, 8 1/2" x 6 1/4"



Clockwise from top left: George Bellows, *Emma in a Black Hat*, lithographic crayon on paper, 12" x 7 1/2"; Gene Kloss, *Adobe Dusk* 1925, etching and soft-ground, 3 1/2" x 4 1/2"; George Bellows, *Between Rounds, Large, First Stone*, 1916, lithograph, 20 1/4" x 16 1/4"; Stephen Longstreet, *Recording Trio*, ink, watercolor, 11" x 8 1/2"; Lucius Kutchin, *Still Life (with Guitar)*, c. 1936, oil on canvas, 36 5/8" x 34 1/2".

C O N T E M P O R A R Y



Clockwise from top left Connie Terry, *Ruin at Sorayetto Plaza*, monotype, 5" x 7"; Tamara Jaeger, *King/Queen*, ceramic, found metal, paint, 18 1/2" x 5 1/2" x 1 1/2"; David Terry, *Snags*, monotype, 10" x 7"; Elsie Sanchez, *Drawing #21*, ink on paper, 11" x 8 1/2"; Alan Gough, *East of Amanda*, oil on canvasboard, 12" x 9"



C O N T E M P O R A R Y



Clockwise from top: Mary Jane Ward, *Wethersfield Vista in Fog*, oil on panel, 6" x 12"; Eric Barth, *Within Reach*, oil pastel and soft pastel on paper over panel, 12" x 14"; Alice Carpenter, *Landscape, 23.5*, handprinted monotype w/ sgraffito and gouache, 5 1/2" x 3 7/8"; Stephen Pentak, *X IV*, oil on panel, 20" x 28"; Lowell Tolstedt, *Clouds*, silverpoint, 5" x 8 3/4"