

Modern Women Masters: 1900-1950  
October 14 – November 18, 2022

**Berenice Abbott (1898-1991)**



*Consolidated Edison Power House. 666 First Avenue, Manhattan, 1938*  
Vintage gelatin silver print, c. 1938  
9 3/8 x 6 13/16 inches  
Federal Art Project "Changing New York" stamps with title, location, date and negative info in pencil on print verso.

**Ruth Bernhard (1905-2006)**



*Creation (Also titled: Doll's Head, Hollywood), 1936*  
Gelatin silver print  
7 11/16 x 9 3/8 inches  
Signed in pencil and dated on recto, lower right.  
Signed, titled and dated on verso

**Margaret Bourke-White (1904-1971)**



*Diamond Edge Saw, Indiana Limestone Company, 1931*  
Vintage gelatin silver print, 1931  
13 3/8 x 9 1/4 inches  
Signed in pencil on mount recto: "A Margaret Bourke-White Photograph" stamp on mount back. Title typed on label attached to mount back.

SOLD



*Locket, Georgia, 1936, c.1936*  
Gelatin silver print, printed c. 1936  
6 1/2 x 4 3/4 inches  
Mounted. Photographer's credit stamp, with title and annotations in pencil on mount verso

SOLD

**Imogen Cunningham (1883-1976)**



*Amaryllis, 1933*  
Vintage gelatin silver print (very scarce)  
9 3/8 x 7 3/8 inches  
Signed recto on on mount in pencil  
Artist's Mills College PO label on mount verso with typed title



*Triangles, 1928/printed c. 1960s*  
Gelatin silver print  
3 11/16 x 2 3/4 inches  
Signed and dated in pencil on mount  
Printed signature with title and date typed on the artist's Green Street label affixed to the reverse of the mount

**Laura Gilpin (1891-1979)**



*Iris*, 1924  
Vintage platinum print (very scarce), 1924  
8 5/8 x 6 5/16 inches  
On a 16" x 12" mount  
Signed and dated, in pencil, on the mount

**Edna Boies Hopkins (1872-1937)**



*Hollyhocks*, c. 1910-13  
Color woodblock print  
10 7/8 x 7 3/8 inches  
Signed in pencil lower left in margin: Edna Boies Hopkins  
Numbered in pencil lower right in margin: "12"  
Catalog raisonne Vasseur #38, p. 66

HOLD



*Pink Chrysanthemums*, circa 1908  
Color woodcut  
11 x 7 inches  
Signed lower left margin: Edna Boies Hopkins  
Numbered lower right: No. 18  
Catalog Raisonne No. 54 (Vasseur)

HOLD



*Zinnias and Sweet William*, c. 1914-15  
Color woodcut  
9 x 8 1/8 inches  
Signed lower left: Edna Boies Hopkins  
Numberd lower right: No. 5  
Catalogue Raisonne Vasseur #74

HOLD

**Lotte Jacobi (1896-1990)**



*Untitled, photogenic*, c.1946-1955  
Vintage gelatin silver print  
7 5/8 x 8 5/8 inches  
Signed on lower right recto of photograph

**Gene Kloss (1903-1996)**



*City*, 1935  
Drypoint, aquatint, roulette  
10 3/4 x 13 7/8 inches  
Signed lower right: Gene Kloss  
Titled lower left: City  
Edition of 30- signed in pencil  
Catalogue Raisonne #329



*Far Across The Rio Grande, 1939*

Etching

10 x 14 inches

Signed lower right: Gene Kloss

Inscribed and titled lower left: Artist's Proof Far Across The Rio Grande

Edition of 75

Catalogue Raisonne #361



*Processional - New Mexico Church, 1937*

Drypoint, soft ground etching, roulette

10 7/8 x 14 inches

Signed lower right: Gene Kloss

Titled lower left

Catalog Raisonne #351

Edition of 50



*Summer Evening In New Mexico, 1941*

Aquatint and drypoint

8 7/8 x 12 inches)

Signed lower right: Gene Kloss

Titled lower left

Edition of 75

Catalogue Raisonne #370



*Taos in Winter, 1934*

Drypoint and aquatint, 9 3/4 x 13 7/8 inches

Titled lower left: Taos in Winter

Signed lower right: Gene Kloss

Sanchez catalogue raisonne no. 301

Edition: 50 (original intended edition of 35)

SOLD

### Dorothea Lange (1895-1965)



*Child of An Impoverished Family from Iowa stranded in New Mexico, August, 1936,*

Vintage gelatin silver print, c. 1936

9 1/2 x 7 1/2 inches

On verso: RA number (faint) in red pencil, 9752C



*Hay fork, Northern Oregon farm. Morrow Country, Oregon, October, 1939*

Vintage gelatin silver print, c. 1939

7 1/8 x 7 1/2 inches

On verso: RA number (faint) in pencil, 34977



*Howard Street in San Francisco, known as "Skid Row", The district of the unemployed, February 1937*

Vintage silver gelatin print, c. 1937

7 x 9  $\frac{3}{4}$  inches

On verso: RA number (faint) in pencil: 16164D



*Oklahoma dust bowl refugees, San Fernando, California, 1935*

Gelatin silver print; printed c. 1935

7 x 9  $\frac{7}{8}$  inches

Photographer's Resettlement Administration credit stamp, negative number stamp and negative number in pencil on print verso.



*Wife and sick child of tubercular itinerant stranded in New Mexico, c. 1935.*

Gelatin silver print; printed c. 1935

8 x 7  $\frac{5}{8}$  inches

Typewritten title, photographer's Resettlement Administration credit and negative number in pencil on print verso.

### Alma Lavenson (1897-1989)



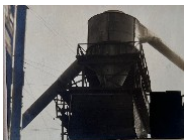
*Egg Box, 1932*

Vintage gelatin silver print: Unique

Image: 9  $\frac{9}{16}$  x 7  $\frac{9}{16}$  inches

Paper: 10 x 8 inches

Signed and dated 1932 in pencil verso on photograph



*Silhouette of a Tank, 1933*

Vintage gelatin silver print: Unique

2  $\frac{7}{8}$  x 3  $\frac{7}{8}$  inches

Mount: 14 x 11 inches

Signed in pencil on mount, titled and dated in pencil on verso of photograph

### Blanche Lazzell (1878-1956)



*Halloween, c. 1920-22*

Batik

15  $\frac{1}{2}$  x 9 inches

### Ethel Mars (1876-1956)



*La Coiffure, 1908*

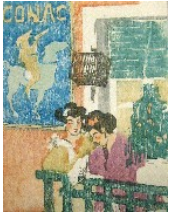
Color woodcut

6  $\frac{1}{2}$  x 5  $\frac{3}{4}$  inches

No stated edition.

Estate stamped verso

Catalogue Raisonne #10



*Two Women At Conac*, c. 1903-08  
Color woodcut  
7 x 5 ½ inches  
Estate stamped on verso  
No stated edition  
Catalogue Raisonne #8



*Two Women Walking*, c. 1904  
7 ¼ x 6 inches  
Estate stamped on verso.  
No stated edition  
Not in Ryan (Rare)

### Dorothy Norman (1905-1997)



*Telephone, in front of Alfred Stieglitz Equivalent, at An American Place, New York*, c. 1940  
Gelatin silver print; printed c. 1970's  
3 ⅜ x 2 ½ inches  
Mounted. Signed in ink with typed title, date, and edition number on label affixed to mount verso.

### Jane Peterson (1876-1965)



*The Pier, Edgartown*, Circa 1915  
Gouache on paper  
17 x 23 ¼ inches  
Signed lower left: Jane Peterson  
Inscribed on the reverse: Boat Landing Edgartown, 1916 NY WCC

### Alice Schille (1869-1955)

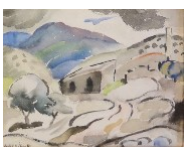


*Colorful Harbor, Boulogne*, c. 1914  
Watercolor  
17 ½ x 21 inches  
Signed lower right: A Schille

SOLD



*Mother and Child in Archway, Mexico*, Circa 1923  
Watercolor  
4 ⅝ x 5 ¾ inches  
Estate stamped: A. Schille



*New Mexico Hills (Winding Road)*, c. 1926  
Watercolor on paper  
5 x 6 ⅛ inches  
Signed lower right: A. Schille



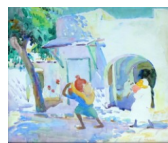
*Provence*, circa 1914  
Watercolor  
17 ½ x 20 ½ inches  
Signed lower right: A. Schille



*Ranchos de Taos, Adobe House in the Distance*, circa 1919-20  
Watercolor  
18 x 21 inches  
Estate stamped lower right: A. Schille



*Tunis Market (North African Market)*, c. 1922  
4 ½ x 5 ½ inches  
Signed lower left: A. Schille



*Water Carrier, Tunis*, 1922  
Watercolor on paper  
17 ½ x 20 ½ inches  
Signed lower right: A. Schille

HOLD

### Maud Hunt Squire (1873-1954)



*Dimanche Au Cafe*, 1912  
Color etching  
9 x 6 ¼ inches  
Signed and dated lower right in pencil: M Squire, Paris 1912  
No stated edition  
Catalogue Reference: Ryan 56



*Woman Mending (Munchen)*, 1913  
Color etching  
7 ¾ x 3 ¼ inches  
Signed lower right in pencil: M Squire, Munchen  
Edition: very small  
Not in Ryan (Rare)

### Grace Martin Taylor (1903-1995)



*Flowers in Window (Tulips)*  
Woodblock, Side 1  
Block cut 1925  
13 7/8 x 12 inches

*Monongahela (Monongahela River)*  
Woodblock, Side 2  
Block cut 1925  
13 ¾ x 12 inches



*Lotus*  
Woodblock, Side 1  
Block cut 1925  
13 ¾ x 12 inches

*Pussy Willow*  
Woodblock, Side 2  
Block cut 1925  
13 ¾ x 12 inches



*Still Life with Lute, 1935*  
18 x 24 inches  
Signed and dated lower right:  
Grace Martin Frame / 1935



*Untitled, 1930*  
Oil on panel  
12 ½ x 10 inches  
initialed lower center: GMF

### Marion Post Wolcott (1910-1990)



*Front of old Negro School house, Greene Co., Georgia, May 1939*  
Gelatin silver print; printed c. 1939  
7 3/16 x 9 ½ inches  
Typewritten title and date, photographer's Farm Security Administration credit stamp, F.S.A. return stamp, and negative number in pencil on print verso.



*In front of City Hall, Belle Glade, Florida, January 1939*  
Vintage gelatin silver print, c. 1939  
6 7/16 x 8 15/16 inches  
On verso, FSA stamps and signed, dated and annotated in pencil by Wolcott, "Original FSA print" and FSA #50924D



*Old Negro near Camden, Alabama, May, 1939*  
Vintage gelatin silver print, c. 1939  
6 ¼ x 8 ⅜ inches  
On verso: FSA stamps, also signed, dated and annotated in pencil by Wolcott, "Original vintage FSA print" with FSA #30350-M4  
Note: To the second FSA stamp that reads "PHOTO BY POST", Wolcott added her married name, in pencil: "Wolcott"

SOLD