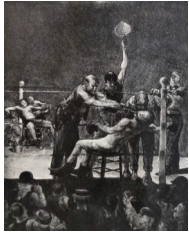


Holiday Treasures
December 1, 2023 - January 12, 2024
CHECKLIST

HISTORIC

George Wesley Bellows (American, 1882-1925)



Between Rounds, Large, First Stone, 1916
Lithograph
20 ¼ x 16 ¼ inches
Signed lower right in pencil: Geo Bellows
Titled lower center in pencil: Between Rounds
Numbered lower right in pencil: NO 46



Emma in a Black Hat
Lithographic crayon on paper
12 x 7 ½ inches
Unsigned
ACA Galleries label verso with information about drawing

Margaret Bourke-White (1904-1971)



Ladle B, Otis Steel Mill, Cleveland, c. 1927-28
Gelatin silver print; printed c. 1927-28
13 ¼ x 10 ⅛ inches
Photographer's credit, title, and "OS #20" annotated in ink with photographer's credit stamp on print verso

Laura Coombs Hills (American, 1859-1952)





Three Roses
Pastel on paper
9 ¼ x 7 ¾ inches
Signed lower left: Laura Hills

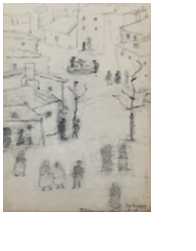

Edna Boies Hopkins (American, 1872-1937)



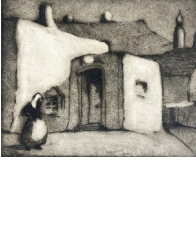
Hollyhocks, c. 1910-13
Color woodblock print
10 ⅞ x 7 ⅜ inches
Signed in pencil lower left in margin: Edna Boies Hopkins
Numbered in pencil lower right in margin: "12"
Catalog raisonne Vasseur #38, p. 66

	<p><i>Mary and her Grandmother</i>, 1917 Color woodcut 10 x 9 inches Signed lower left in pencil: Edna Boies Hopkins Inscribed lower right in pencil: No. 2 Catalog raisonne #13</p>
	<p><i>Merry Xmas from Cape Cod</i>, circa 1917-20 Color woodcut 4 1/2 x 3 1/2 inches Inscription: Merry Xmas fr[om] Cape Cod / Edna and James Hopkins Unnumbered Cat. Raisonné no. 14</p>


Ray Kinsman-Waters (American, 1887-1962)

	<p><i>Le Mans Street Scene</i>, 1919 Drawing 8 x 5 inches Signed and dated lower right: R. Kinsman-Waters 1919 Le Mans</p>
	<p><i>Street Scene</i> Drawing 5 1/4 x 8 inches Signed lower right: Ray Kinsman-Waters</p>

Gene Kloss (American, 1903-1996)

	<p><i>Adobe Dusk</i>, 1925 Etching and soft-ground 3 1/2 x 4 1/2 inches Signed lower right: Gene Kloss Titled lower left: Adobe Dusk Edition unknown: very few impressions</p>
---	---

Lucius Kutchin (American, 1901-1936)

	<p><i>Still Life (with Guitar)</i>, c. 1936 Oil on canvas 36 5/8 x 34 1/2 inches Signed lower right: Lucius Kutchin</p>
---	--

Dorothea Lange (1895-1965)



Kiva, Isleta, New Mexico, 1938
Gelatin Silver Print
Printed c. 1940S
7 ¼ x 9 ¼ inches
Title and negative number in blue ink verso: 38110
“Religious Freedom” in pencil by Lange with printing notes on verso.
“DL” in red grease pencil and other notations in unknown hand on verso
Scarce image

Provenance:

The Artist;
Maynard Dixon (first husband);
Their son.

Lucy Lewis (Acoma, Pueblo, c. 1890-1992)



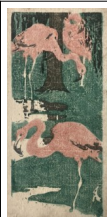
Vessel, 1962
5 x 8 inches
Signed and dated on bottom: Lucy Lewis / Acoma NM 1962

Stephen Longstreet (American, 1907-2002)

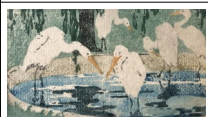


Recording Trio,
Ink, watercolor on paper
11 x 8 ½ inches
Titled upper left: "Recording Trio"
Inscribed lower left "GELLAR JAZZ"
Signed lower right: Longstreet

Ethel Mars (American, 1876-1956)



Flamingos, c. 1903-04
Color woodcut
7 ¾ x 3 ¾ inches
Estate stamped verso
Edition of c. 30
230123EM



Les Aigrettes, c. 1903-04
Color woodcut
4 x 7 ⅛ inches
Estate stamped verso
Edition of c. 30

Elizabeth Nourse (American, 1859-1938)



Market in the Campo dei Fiori, 1890

Watercolor

18 1/4 x 24 inches

Signed, dated and inscribed lower right: Elizabeth Nourse, Rome, 1890 / Market in the Campo dei Fiori

Elijah Pierce (American, 1892-1984)



Black Beauty (Lena Horne), circa 1940

Bas relief wood carving

8 3/4 x 5 1/4 inches



Masonic Staff, circa late 1960s

Carved and painted wooden staff

33 1/3 x 1 1/2 inches

Maurice B. Prendergast (American, 1858-1924)



St. Malo, c. 1907

Oil on panel

8 5/8 x 6 1/4 inches

Signed lower right: Prendergast

Edward Potthast (American, 1857-1927)



A Breezy Day at the Beach, c. 1915

Oil on panel

4 x 6 inches

Signed lower right: E Potthast

Aminah Brenda Lynn Robinson (1940-2015)



Black Woman with Shells in Her Hair,

Mixed media on handmade paper

11 x 9 1/2 inches

Alice Schille (American, 1869-1955)

	<p><i>Flickering Trees</i>, c. 1925-30 Watercolor 25 ⁵/₈ 20 inches Estate stamped lower right: A. Schille</p>
	<p><i>Morning in the Pyrenees</i>, circa 1925 Watercolor 17 x 21 inches Signed lower right: A. Schille</p>
	<p><i>New Mexico Hills (Winding Road)</i>, c. 1926 Watercolor on paper 5 x 6 ¹/₈ inches Signed lower right: A. Schille</p>
	<p><i>Ranchos de Taos-Oblique View</i>, c. 1919-20 Watercolor on paper 18 x 21 inches Estate stamped lower right: A Schille</p>
	<p><i>Sunlit Trees</i>, Circa 1920-1925 Watercolor on paper 4 ³/₄ x 5 ³/₄ inches Signed lower right: A. Schille</p>