




*American Women Masters*  
 September 29 – November 3, 2023  
**Checklist**



**Berenice Abbott (1898-1991)**

	<p><i>504-506 Broome St, 1935</i>          Gelatin silver print; printed c.1935          8 x 10 in.          Title, date, and annotations in pencil with Federal Art Project's "Changing New York" stamp and Photographer's "50 Commerce St." address stamp on print verso.</p>
	<p><i>Broadway to the Battery, Manhattan, May 4, 1938</i>          Gelatin silver print; printed c.1938          Image size: 9 5/8 x 7 1/8 inches          Paper size: 10 x 8 inches          Federal Art Project "Changing New York" credit stamp with title, date, negative number and code number annotated in pencil on print verso.</p>

**Margaret Bourke-White (1904-1971)**

	<p><i>Ladle B, Otis Steel Mill, Cleveland, c. 1927-28</i>          Gelatin silver print; printed c. 1927-28          13 1/4 x 10 1/8 inches          Photographer's credit, title, and "OS #20" annotated in ink with photographer's credit stamp on print verso</p>
---	--

**Mary Cassatt (1844-1926)**

	<p><i>The Lamp, 1890</i>          Drypoint, soft ground and aquatint          16 3/4 x 11 1/2 inches          Signed and inscribed lower right: Imprime pour l'artiste ed. M. Leroy/Mary Cassatt</p>
	<p><i>Lydia Reading, Turned Toward Right, c. 1881</i>          Soft ground and aquatint on paper          7 x 4 1/4 inches          Signed in pencil: Mary Cassatt</p>

**Lilian Westcott Hale (American, 1881-1963)**



*Apple Blossoms and Narcissus*, 1912  
Charcoal on paper  
28 <sup>3</sup>/<sub>4</sub> x 22 <sup>5</sup>/<sub>8</sub> inches  
Signed upper right: Lilian Westcott Hale

**Laura Coombs Hills (1859-1932)**



*Three Roses*  
Pastel on paper  
9 <sup>1</sup>/<sub>4</sub> x 7 <sup>3</sup>/<sub>4</sub> inches  
Signed lower left: Laura Hills

**Claude Raguet Hirst (American, 1855-1942)**



*The Last Poem*, circa 1900  
Oil on canvas  
10 x 7 <sup>1</sup>/<sub>2</sub> inches  
Signed lower right: Claude Raguet Hirst NY  
Label on reverse: The Last Poem



**Edna Boies Hopkins (1872-1937)**



*Hollyhocks*, c. 1910-13  
Color woodblock print  
10 <sup>7</sup>/<sub>8</sub> x 7 <sup>3</sup>/<sub>8</sub> inches  
Signed in pencil lower left in margin: Edna Boies Hopkins  
Numbered in pencil lower right in margin: "12"  
Catalog raisonne Vasseur #38, p. 66



*Mary and her Grandmother*, 1917  
Color woodcut  
10 x 9 inches  
Signed lower left in pencil: Edna Boies Hopkins  
Inscribed lower right in pencil: No. 2  
Catalog raisonne #13

	<p><i>Purple Daisy</i>, Color woodblock print 11 x 7 ¼ inches Numbered lower right: No. 9 Vasseur catalogue raisonne no. 58</p>
	<p><i>Zinnias and Sweet William</i>, c. 1914-15 Color woodcut 9 x 8 ⅛ inches Signed lower left: Edna Boies Hopkins Numbered lower right: No. 5 Vasseur catalogue raisonne no. 74</p>

### Gene Kloss (1903-1996)

	<p><i>Adobe Dusk</i>, 1925 Etching and soft-ground 3 ½ x 4 ½ inches Signed lower right: Gene Kloss Titled lower left: Adobe Dusk Catalogue Raisonne No. 55 Edition unknown: very few impressions</p>
	<p><i>Ingleside</i>, 1925 (California) Drypoint with hand coloring 4 x 5 inches Signed lower right: Gene Kloss Titled lower left: Ingleside Catalogue Raisonne No. 1 Edition: unknown: only two known impressions</p>
	<p><i>Processional - New Mexico Church</i>, 1937 Drypoint, soft ground etching, roulette 10 7/8 x 14 inches Signed lower right: Gene Kloss Titled lower left Catalog Raisonne #351 Edition of 50</p>
	<p><i>Summer Evening In New Mexico</i>, Aquatint and drypoint 8 7/8 x 12 inches Signed lower right: Gene Kloss Titled lower left Edition of 75</p>

### Dorothea Lange (1895-1965)



*Kiva, Isleta, New Mexico*, 1938

Gelatin Silver Print

Printed c. 1940S

7 1/4 x 9 1/4 inches

Title and negative number in blue ink verso: 38110

“Religious Freedom” in pencil by Lange with printing notes on verso.

“DL” in red grease pencil and other notations in unknown hand on verso

**Provenance:**

The Artist;

Maynard Dixon (first husband);

Descendant of Dixon



*Native American Girl, Taos, New Mexico*, 1931

Vintage Gelatin Silver Print

Printed c. 1931

3 3/8 x 2 5/8 inches

**Provenance:**

The Artist;

Maynard Dixon (first husband);

Descendant of Dixon



*Wife and sick child of tubercular itinerant stranded in New Mexico., c. 1935, c.1935*

Gelative silver print; printed c. 1935

8 x 7 5/8 inches

Typewritten title, photographer's Resettlement Administration credit and negative number in pencil on print verso.

### Blanche Lazzell (1878-1956)



*Boats and Water (Provincetown)*, 1918

Color woodcut

9 1/8 x 9 1/8 inches

Titled lower left: Boats in Water (under mat)


Signed lower right: Blanche Lazzell

Annotated verso: Boats and Water / Blanche Lazzell / \$20


John Clarkson catalogue raisonne block no. 7; one of three impressions

Three recorded impressions in artist's journal





### Lucy Lewis (1890-1992)

	<p><i>Vessel</i>, 1962 5 x 8 inches Signed and dated on bottom: Lucy Lewis / Acoma NM 1962</p>
---	--

### Clara MacChesney (1860/61-1928)

	<p><i>Paris Plage</i>, 1914 Oil on canvas 10 x 14 inches Signed, dated, inscribed lower right</p>
---	---

### Ethel Mars (American, 1876-1956)

	<p><i>Flamingos</i>, c. 1903-04 Color woodcut 7 3/4 x 3 3/4 inches Estate stamped verso Edition of c. 30</p>
	<p><i>La Coiffure</i>, 1908 Color woodcut 6 1/2 x 5 3/4 inches No stated edition. Estate stamped verso Catalogue Raisonne #10</p>
	<p><i>Les Aigrettes</i>, c. 1903-04 Color woodcut 4 x 7 1/8 inches Estate stamped verso Edition of c. 30</p>
	<p><i>Two Ducks</i>, c. 1903-08 Color woodcut 3 7/8 x 4 1/2 inches Signed in pencil on the support sheet No stated edition</p>



*Two Women Walking*, c.1904  
Color woodcut  
7 ¼ x 6 inches  
Estate stamped on verso.  
No stated edition  
Not in Ryan (Rare)

### Rhoda Holmes Nicholls (1854-1930)



*Dory Fisherman, Gloucester*  
Watercolor on paper  
8 ½ x 13 ¾ inches  
Signed lower left: Rhoda Holmes Nicholls

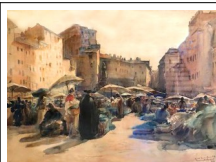


*Woman Sewing beside a Window*  
Watercolor on paper  
13 ½ x 9 ¾ inches  
Signed Rhoda Holmes Nicholls



*Sailboats, Venice*  
Watercolor on paper  
5 ½ x 10 inches  
Signed lower right: Rhoda Holmes Nicholls

### Elizabeth Nourse (1859-1938)



*Market in the Campo dei Fiori*, 1890  
Watercolor  
18 ¼ x 24 inches  
Signed, dated and inscribed lower right: Elizabeth Nourse, Rome, 1890 / Market in the Campo dei Fiori

### Jane Peterson (1876-1965)



*The Boat Landing*, circa 1915  
Gouache and charcoal  
18 x 24 inches  
Signed lower right: Jane Peterson  
Inscribed with title on reverse



*The Pier, Edgartown, Circa 1915*  
Gouache on paper  
17 x 23 ¼ inches  
Signed lower left: Jane Peterson  
Inscribed on the reverse: Boat Landing Edgartown, 1916 NY WCC

**Aminah Brenda Lynn Robinson (1940-2015)**



*Black Woman with Shells in Her Hair,*  
Mixed media on handmade paper  
11 x 9 ½ inches



*Rooster Dance (Pages in History), 1982*  
Charcoal, mixed media on handmade paper  
5 x 7 ½ inches  
Signed and dated lower center: (c) 1982 Aminah Brenda Lynn Robinson

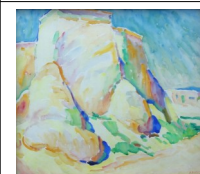


*Short Walks Along The Plantation Fields*  
Mixed media on board  
76.25 x 25.25 x 1.5 inches  
Signed and dated lower right: Brenda Lynn Robinson/1978

**Alice Schille (1869-1955)**



*Morning in the Pyrenees*  
Watercolor on paper  
17 x 21 inches  
Signed lower right: A. Schille




*Ranchos de Taos-Side View (Oblique View), circa 1919-20*  
Watercolor on paper  
18 x 21 inches  
Estate stamped lower right: A Schille



*Ranchos de Taos in Full Sun, Front View*  
circa 1919-20  
Watercolor on paper  
17 7/8 x 20 3/4 inches  
Estate stamped: A. Schille

### Maud Hunt Squire (1873-1954)

	<p><i>Dimanche Au Cafe</i>, 1912 Color Etching 9 x 6 1/4 inches Signed and dated lower right in pencil: M Squire, Paris 1912 No stated edition Ryan 56</p>
---	--

### Grace Martin Taylor (1903-1995)

	<p><i>Monongahela (Monongahela River)/Flowers in Window (Tulips)</i>, 1925/1925 Two sided woodblock Block cut 1925 13 7/8 x 12 inches</p>
	<p><i>Lotus/Pussy Willow</i>, 1925/1925 Two sided woodblock Block cut 1925 13 3/4 x 12 inches</p>
	<p><i>Still Life with Pitcher</i>, 1935 Oil on board 18 x 22 inches Signed lower right: G FRAME</p>
	<p><i>Japanese Vase</i>, 1931/85 White line woodblock print 14 1/2 x 12 1/4 inches</p>
	<p>Untitled, 1930 Oil on panel 12 1/2 x 10 inches Initialed: GMF</p>



**Marion Post Wolcott (1910-1990)**



*Front of old Negro School house, Greene Co., Georgia, May 1939*

Gelatin silver print; printed c. 1939

7 3/16 x 9 1/2 inches

Typewritten title and date, photographer's Farm Security Administration credit stamp, F.S.A. return stamp, and negative number in pencil on print verso.