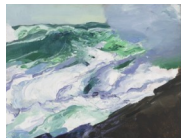


Edward Potthast and the Ohio Impressionists

March 24 – April 28, 2023

George Wesley Bellows (1882-1925)



Tumble of Waters, 1913 (Monhegan, Maine)

Oil on panel

15 x 19 ½ inches

Signed lower right: Geo Bellows

Robert Blum (1857-1903)



To the Lido, Venice, 1880

Watercolor

10 ¾ x 14 ¾ inches

Signed, dated, and inscribed upper right: Blum 1880 Venice

Inscribed lower left: To Lido

Theodore Butler (1861-1936)



Lili Reading, 1909

Oil on canvas

29 x 23 ½ inches

Signed and dated lower left: T E Butler 09

Edna Boies Hopkins (1872-1937)



Hollyhocks, c. 1910-13

Color woodblock print

10 7/8 x 7 3/8 inches

Signed in pencil lower left in margin: Edna Boies Hopkins

Numbered in pencil lower right in margin: "12"

Catalog raisonne Vasseur #38, p. 66



Zinnias and Sweet William, c. 1914-15

Color woodcut

9 x 8 1/8 inches

Signed lower left: Edna Boies Hopkins

Numbered lower right: No. 5

Catalog raisonne Vasseur #74, p. 91

James R. Hopkins (1877-1969)



Weeping Willows, c. 1910-14

Oil on canvas

40 x 32 inches

Signed lower left: James R. Hopkins

Charles Kaelin (1858-1929)

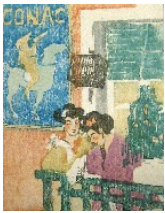
Gloucester Harbor (Bright Sunlight),
Pastel on paper
13 $\frac{3}{4}$ x 15 $\frac{1}{2}$ inches
Signed lower left: C S Kaelin
Titled on label in sleeve verso: Bright Sunlight

Ray Kinsman-Waters (1887-1962)

In the Garden, Grandview, c. 1916
Pastel
18 $\frac{1}{2}$ x 17 inches
Signed lower right: R. Kinsman Waters

Ethel Mars (1876-1956)

La Coiffure, 1908
Color woodcut
6 $\frac{1}{2}$ x 5 $\frac{3}{4}$ inches
No stated edition.
Estate stamped verso
Catalogue Raisonne #10



Two Women At Conac, c. 1903-08
Color woodcut
7 x 5 $\frac{1}{2}$ inches
Estate stamped on verso
No stated edition
Catalogue Raisonne #8

Helen McCarthy (1884-1927)

Sunny Day, Boothbay Harbor, Maine (Above the Harbor), c. 1920
Oil on canvas
25 x 30 inches
Signed lower right: Helen K. McCarthy

Edward Potthast (1857-1927)

A Breezy Day at the Beach, c. 1915
Oil on panel
4 x 6 inches
Signed lower right: E Potthast



Afternoon Fishing,
Oil on canvasboard
12 x 16 inches
Signed lower right: e Potthast
Inscribed verso: Edward Potthast / 222 W 59th Street / New York City



Approaching Fog, c.1925
Oil on canvas on board
12 x 16 inches
Signed lower right: E. Potthast



At the Seaside, c. 1920
Oil on board
12 ¼ x 16 inches
Signed lower right: E Potthast



Dappled Light, c. 1915-20
Oil on panel
16 x 12 inches
Signed lower right: E Potthast



Lawn Party
Oil on board
12 x 16 inches
Signed lower right: E Potthast



Rocks and Surf
Oil on canvas
16 x 20 inches
Signed lower left: E Potthast



Toy Balloons, 1910
Oil on board
16 x 12 inches
Signed lower right: E Potthast



Trinity Church, c.1920
Oil on board
12 ¼ x 9 inches
Signed lower right: E. Potthast

Alice Schille (1869-1955)



Beach Scene, Northern France, c. 1914
Watercolor
18 x 21 inches
Signed lower right: A. Schille



Mother and Child in Archway, Mexico, c. 1923
Watercolor
4 ⅝ x 5 ¾ inches
Estate stamped: A. Schille



Playmates (Little Sister), c. 1910
Oil on canvas
24 x 29 inches
Signed lower right: A. Schille



Pig Market, c. 1912-1914
Watercolor
18 x 20 ½ inches
Estate stamped



Provence, c. 1914
Watercolor
17 ½ x 20 ½ inches
Signed lower right: A. Schille



Summer, Volendam, c. 1905
Watercolor on paper
8 ½ x 11 inches
Signed lower right



Sunlit Trees, circa 1920-1925
Watercolor on paper
4 ¾ x 5 ¾ inches
Signed lower right: A. Schille



The Hillside, 1910
Oil on canvas
29 ⅝ x 37 ⅝ inches
Signed lower right: A. Schille



Tunis Market (North African Market), c. 1922
4 ½ x 5 ½ inches
Signed lower left: A. Schille

Maud Hunt Squire (1873-1954)



Au Casino de Montmartre, 1913
Gouache, watercolor and crayon on board
18 x 21 inches
Signed lower right: M Squire
Inscribed verso: Au Casino de Montmartre / M.H. Squire
Edition: very small



Woman Mending (Munche), 1913

Color etching

7 3/4 x 3 3/4 inches

Signed lower right in pencil: M Squire, Munchen

Edition: very small

John H. Twachtman (1853-1902)



J Alden Weir's Cottage, Branchville, CT, c. 1890

Pastel on paper

8 1/2 x 7 inches

Signed

A. James Weber (1882-1958)



Sunlit Church and Trees

Oil on panel

8 x 10 inches

Signed upper right: A. J. Weber